

DWL-G650 and DWL-G520 Range F.A.Q.

1. What is SSID?

SSID, or **Service Set Identifier**, is the workgroup name of your Wireless Network. All devices (Access Points, Wireless Routers, and Wireless Network Adapters) must all have the same SSID to communicate on the Wireless Network. All D-Link Wireless devices have the default SSID of **default**, all lower case.

- You can use up to 32 letters and/or numbers.
- Do not use spaces, dashes, slashes, or other non-alphanumeric characters.
- The SSID is CaSe-SenSiTiVe.

2. How do I enable Encryption on the DWL-650 Rev.L1, DWL-520+, DWL-650+, DWL-G520 and DWL-G650?

It is recommended to enable encryption on your wireless router or access point before your wireless network adapters. Please establish wireless connectivity before enabling encryption.

Note: Your network will slow down and wireless signal may degrade when enabling encryption due to the added overhead.

Step 1 Open the D-Link AirPlus wireless utility by double-clicking on the bar graph icon in your system tray (lower-right corner of screen). Select **Site Survey**.

Step 2 Highlight your SSID in the **Available Networks Authentication** for the auth. mode. Click **Connect**.

Step 3 The Data Encryption box should be checked and greyed-out. If not, then enable encryption on your access point or wireless router first. Auth. Mode should be set to **Shared Authentication**. Under Key Length, select **64**, or **128-bits**. Click on Default Key **1** and enter the Hex encryption key that was entered into the wireless router or access point. The key length will depend on the selection made under the key length. The key is HEX, meaning **A-F** and **0-9**.

- 64-bit 10 characters
- 128-bit 26 characters

Connect: Newport

Profile Name: Newport

SSID: Newport

Wireless Mode: Infrastructure

Channel: 6

Tx Rate: 11 Mbps

Preamble: Long Preamble

Power Mode: Continuous Access Mode

Data Encryption

Auth. Mode: Shared Authentication

Passphrase: Done

Default Key	Network Key	Key Length
<input checked="" type="radio"/> 1	84598562310025687999999995	128 bits
<input type="radio"/> 2	<input type="text"/>	64 bits
<input type="radio"/> 3	<input type="text"/>	64 bits
<input type="radio"/> 4	<input type="text"/>	64 bits

Key Format: HEX

OK Cancel

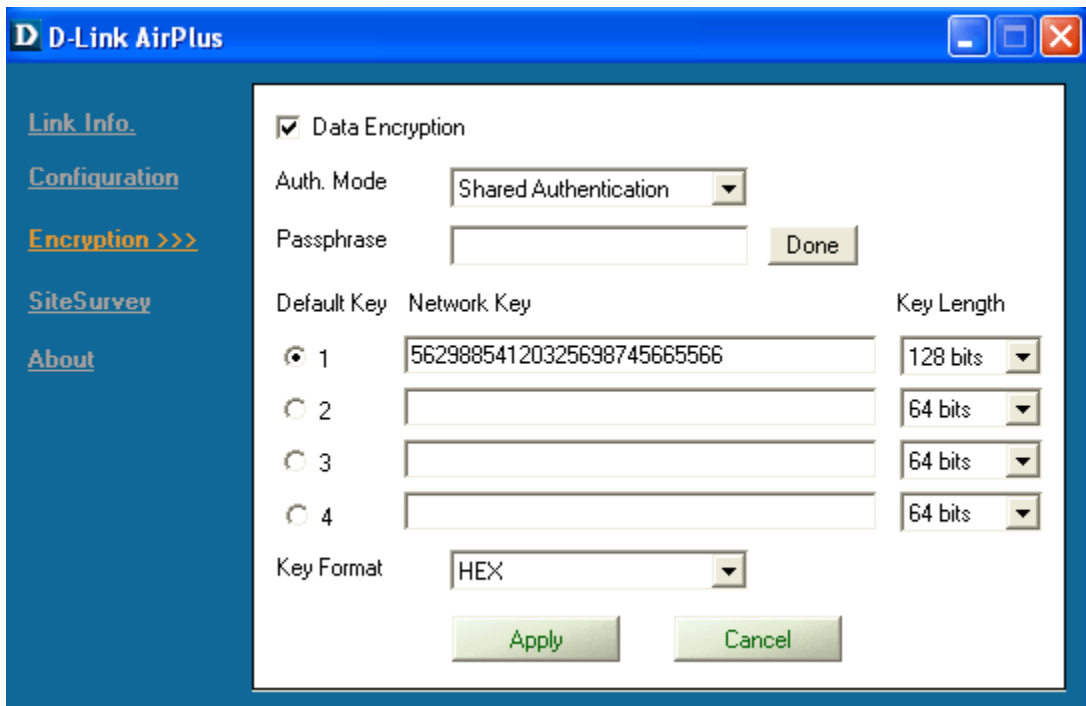
Step 4 Click on the **OK** button to save your settings.

If your wireless network is not showing up under site survey:

Step 1 Open the D-Link AirPlus wireless utility by double-clicking on the bar graph icon and select **Encryption**.

Step 2 Put a check in the **Data Encryption** box and select **Shared Authentication** in the auth. mode menu. Select **64**, or **128-bit** encryption for the key length. Under **key 1** type in the Hex encryption key that was entered into the wireless router/access point. The key length will depend on the selection made under the key length. The key is HEX, meaning **A-F** and **0-9**.

- 64-bit 10 characters
- 128-bit 26 characters

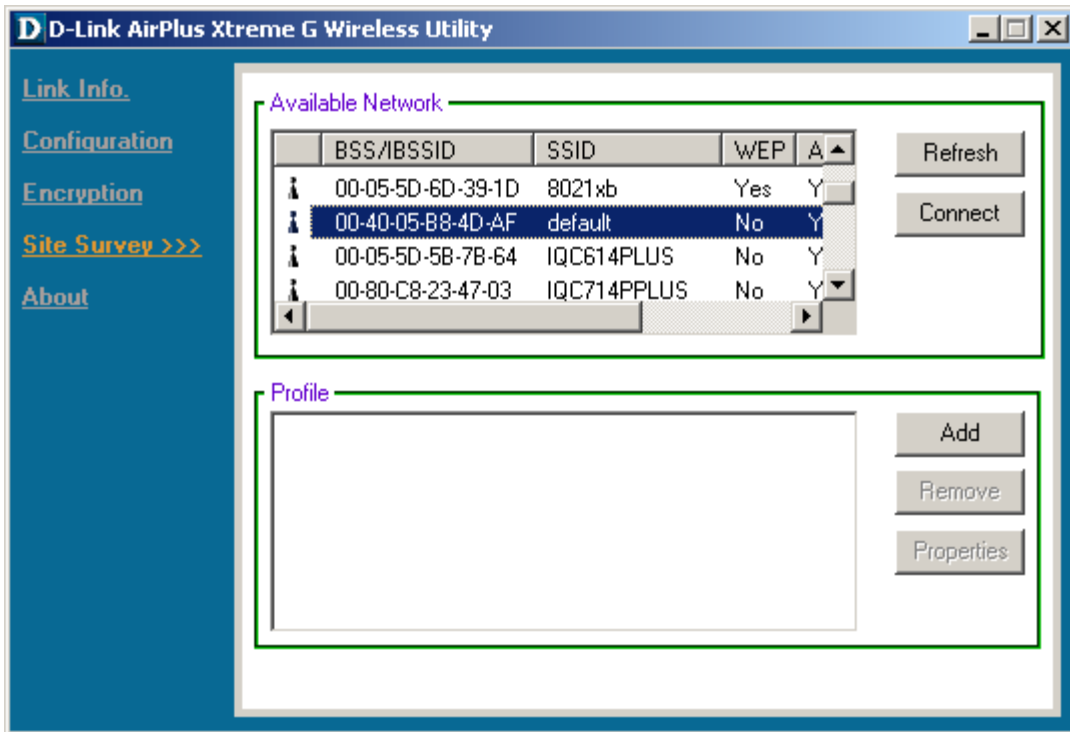


Step 4 Click on the **Apply** button to save your settings.

3. How do I configure the DWL-G650 and DWL-G520 using D-Link's XtremeG wireless utility?

Step 1 Access the D-Link configuration by double-clicking on the **bar graph** icon in the system tray.

Step 2 Select the **Site Survey** link from the left hand menu. Highlight the **SSID** of your wireless Access Point or wireless router and click on the **Connect** button.



Click **OK**

Connect:default [X]

Profile Name: default

SSID: default

Wireless Mode: Infrastructure

Channel: 6

Tx Rate: Auto

Preamble: Long Preamble

Power Mode: Continuous Access Mode

Data Encryption

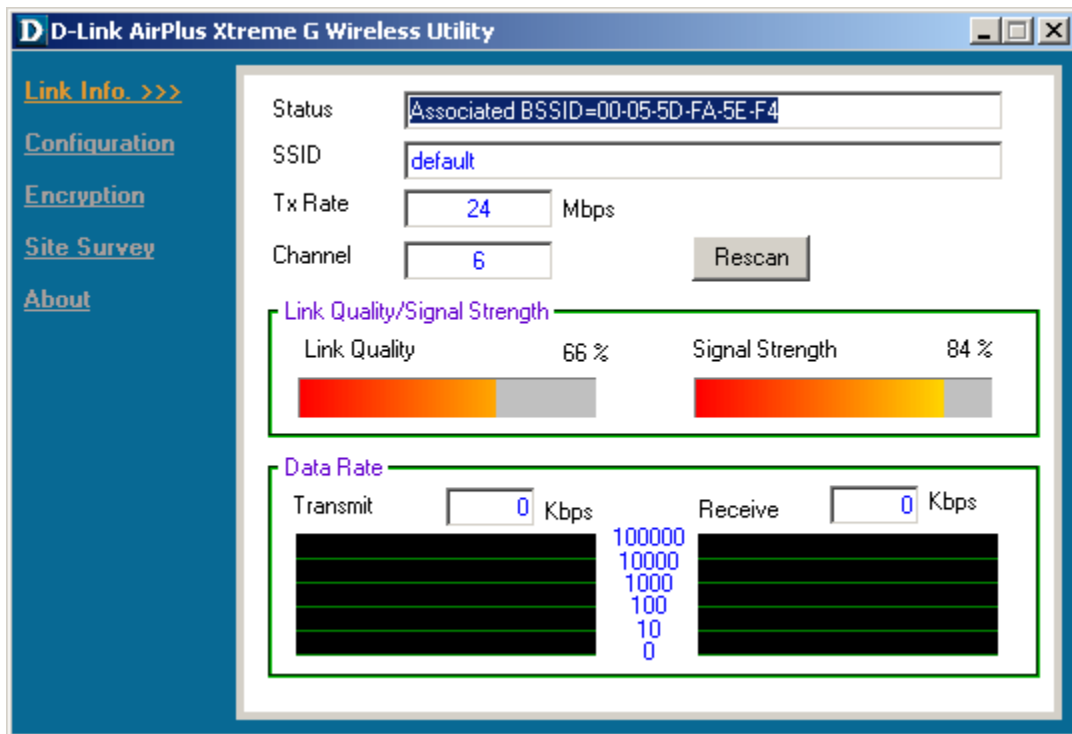
Auth. Mode: Auto

Default Key	Network Key	Key Length
<input type="radio"/> 1		64 bits
<input type="radio"/> 2		
<input type="radio"/> 3		
<input type="radio"/> 4		

Key Format: HEX

OK Cancel

Step 3 This will take you back to the **Link Info** window. From here you can view your link status.



What if I don't see my wireless network in Site Survey?

Step 1 Access the configuration by double-clicking on the **bar graph** icon in the **system tray**.

Step 2 Select the **Configuration** link from the left hand menu. Type in the **SSID** of your wireless router in the SSID field. Change the **Wireless Mode** to **Infrastructure** and then click on **Apply** to save your settings.

D-Link AirPlus Xtreme G Wireless Utility

[Link Info.](#)
[Configuration >>>](#)
[Encryption](#)
[Site Survey](#)
[About](#)

SSID:

Wireless Mode:

Channel:

Tx Rate:

Preamble:

Power Mode: