



## Princess Alexandra Hospital, QLD

### Nuclias Cloud - Delivering Reliable Wireless Coverage and Faster Internet Speed to the Bedside.



*“High-Speed Wi-Fi allows the patients to not only access entertainment but rehabilitate... It also has benefits for us as staff, but the important thing is it makes the patients more comfortable and gives them something to do in their free time.”*

— Elizabeth Walter, Spinal Injury Unit Nursing Unit Manager, PA Hospital

Contact us for more information on D-Link Network Solutions for your business.

1300 700 100  
www.dlinkbusiness.com.au  
business@dlink.com.au

In Partnership with



www.aandstech.com.au

#### Background

##### Client and Location:

The PA Research Foundation (PARF) has a long history of funding world-class research into deadly and debilitating diseases ranging from cancer, heart disease, diabetes, liver disease, arthritis, kidney and renal disease.

PARF had aging network infrastructure widely distributed throughout their Woolloongabba site, with Wi-Fi Access Points providing free Internet access to Oncology and Dialysis patients. There was a mix of Cloud Managed and standalone network equipment – and the inconsistency was causing issues for patients and staff alike.

Patients can spend many months in rehabilitation – some up to 12 months. Technology is an important part of helping patients stay connected to friends and family, as well as making a smooth transition back to life in the community. As a result, reliable Wi-Fi and Internet connectivity are more important than ever.

PARF received a donation from a family of a patient of the Brain Injury unit to help facilitate this, along with some of their own funding. D-Link Partner, A & S Tech, were engaged to deliver this vision.

#### Overview

D-Link's Engineers visited the Spinal and Brain Injury wards, performing a Wi-Fi Site Survey, alongside A & S Tech staff. A detailed report was prepared, recommending Nuclias Cloud Managed 802.11ac Wi-Fi Access Points, along with Nuclias Cloud Managed Network Switches. In addition to the new networking equipment, a Firewall and upgraded Internet Connection were also provisioned.

30 Wi-Fi Access Points and 6 Switches were replaced with D-Link Nuclias Cloud Access Points and Switches throughout the Woolloongabba site. The Switches were all interconnected by gigabit fibre runs – and linked to PARF's existing Switch infrastructure.

The Internet connection for the site was upgraded to a 1GB/1GB connection to handle the additional load of the free Wi-Fi network.

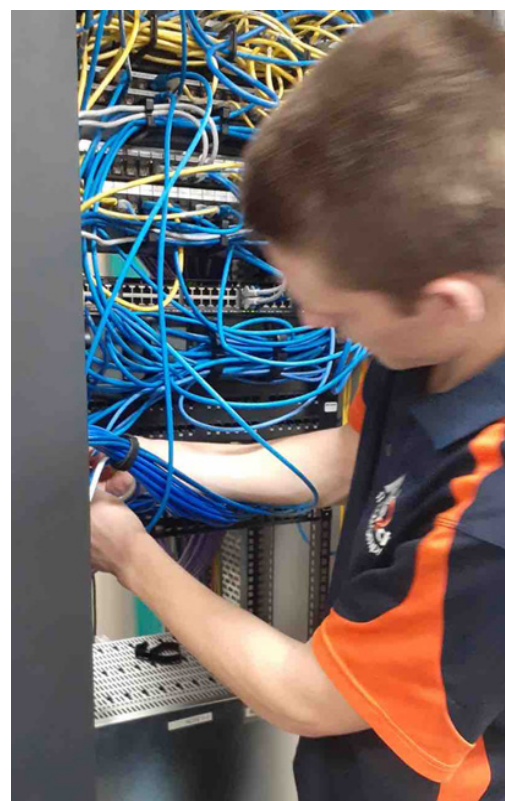
Using Nuclias Cloud, A & S Tech pre-configured the Switches and Access Points off-site, returning on-site simply to install the devices and test, meaning little imposition on the hospitals operations.

#### The Challenges

The biggest challenge on this project was delivering the Internet connection into the building. Asbestos was found in some of the cable tunnels, and COVID-19 meant access to some areas of the Hospital were restricted.

As a result it took over four months for the 1GB/1GB Internet connection to be delivered to the main Communications Room.

The D-Link Wi-Fi Site Survey also revealed many other 2.4GHz Wi-Fi networks in the hospital. To improve the user experience it was decided to deploy the Wi-Fi network as 5GHz only. More Wi-Fi Access Points would be required, however, reliability and speed would be significantly improved.



Continues on the next page...



## Princess Alexandra Hospital, QLD

Nuclias Cloud - Delivering Reliable Wireless Coverage and Faster Internet Speed to the Bedside.



*"Having access to high-speed Internet has made my stay at PA Hospital easier. It has allowed me to keep my mobile data separate and helped me to keep in touch with family members... It makes a huge difference."*

— Joyce Uganzi, Patient at PA Hospital






### The WOW Factors

Put simply - coverage and speed. The new Wi-Fi Solution is able to achieve speed tests of over 100Mb/100Mb. Patients who may be in a recovery ward for up to 12 months can now get reliable and fast Internet, enabling video conversations with friends and family anywhere in the country or the world. This is truly life enhancing and changing.

### Customer Feedback

Joyce Uganzi, a patient for the past six months, said, "Having access to high-speed Internet has made my stay at PA Hospital easier. It has allowed me to keep my mobile data separate and helped me to keep in touch with family members in Gambia. I use it mostly for Netflix and you'd be surprised, I even watch Korean dramas as they keep me entertained! It would be very hard without the Wi-Fi because we're spending three hours on average in therapy and doing other rehab activities each morning, but most of the afternoons we're just hanging out in our rooms, so it does help. It makes a huge difference."

### Products integrated in this solution include:

 	<p><b>30 x D-Link DBA-1510P</b> Nuclias Cloud-Managed Wireless AC1750 Dual Band PoE Access Points</p>
 	<p><b>2 x D-Link DBS-2000-28MP</b> Nuclias Cloud-Managed 28-Port Gigabit 370W PoE Switches with 28 RJ45 (24 PoE) and 4 Combo SFP ports</p>
 	<p><b>2 x D-Link DBS-2000-28P</b> Nuclias Cloud-Managed 28-Port Gigabit 193W PoE Switches with 28 RJ45 (24 PoE) and 4 Combo SFP ports</p>
 	<p><b>2 x D-Link DBS-2000-10MP</b> Nuclias Cloud-Managed 10-Port Gigabit 130W PoE Switches with 8 PoE RJ45 and 2 SFP ports</p>

Contact us for more information on D-Link Network Solutions for your business.

1300 700 100  
www.dlinkbusiness.com.au  
business@dlink.com.au

In Partnership with



www.aandstech.com.au



Joyce Uganzi with PA Hospital Spinal Injury Unit Nursing Unit Manager Elizabeth Walter